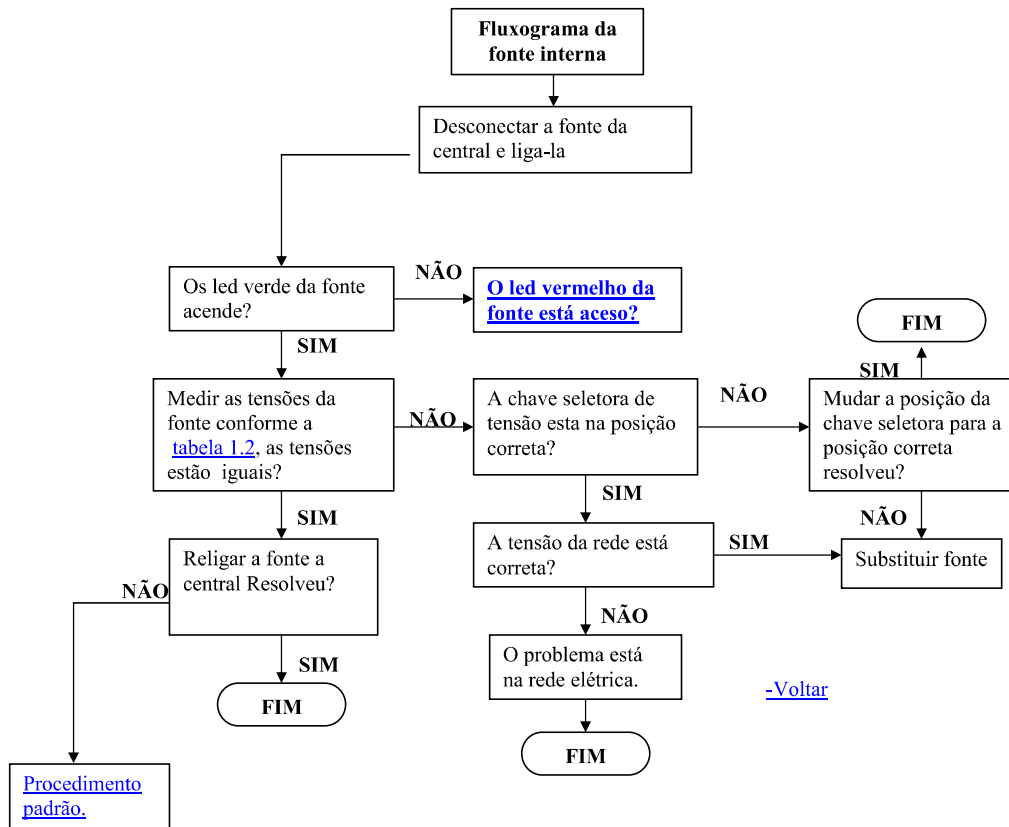


FLUXOGRAMA DE MANUTENÇÃO

- A CENTRAL NÃO LIGA?
- LEDS DA CPU NÃO PISCAM?
- O SISTEMA TRAVA?
- A CPU NÃO RECONHECE AS PLACAS?
- O SISTEMA NÃO POSSUI TOM DE LINHA?
- O SISTEMA NÃO EFETUA DISCAGEM?
- O SISTEMA NÃO FECHA AUDIO?
- O SISTEMA NÃO TOCA?
- O SISTEMA APRESENTA RUÍDO?
- EXISTEM RAMAIS INOPERANTES?
- EXISTEM RAMAIS TOCANDO DIRETO?
- PROCEDIMENTO PADRÃO



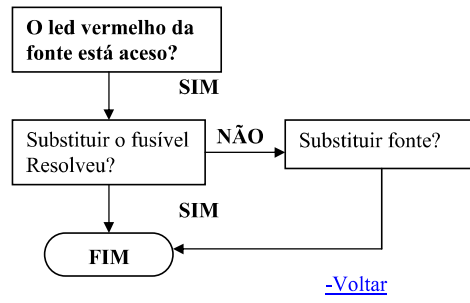
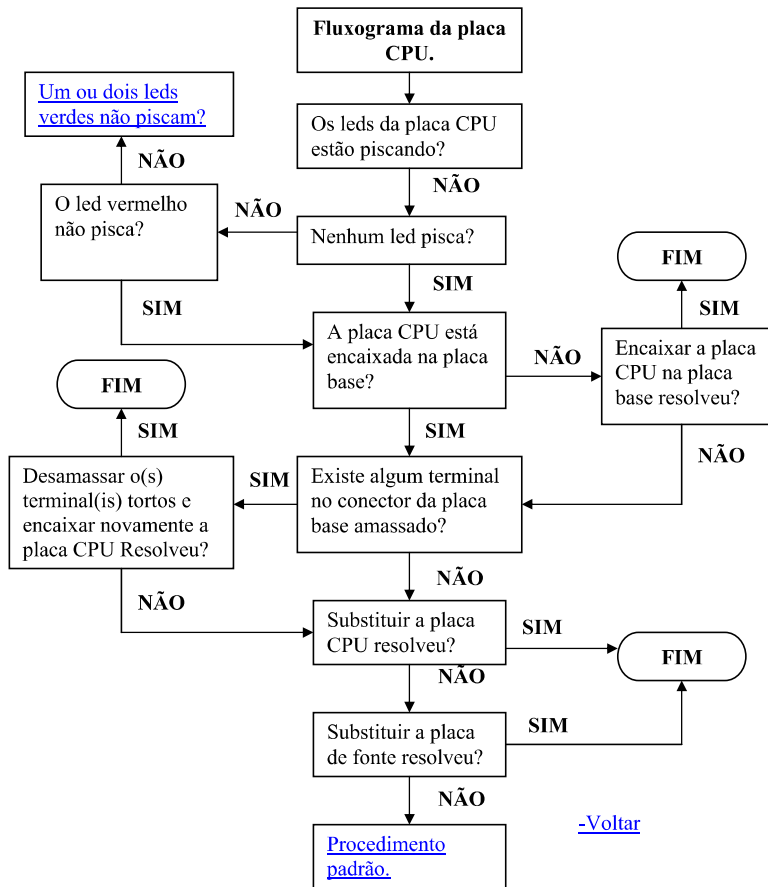
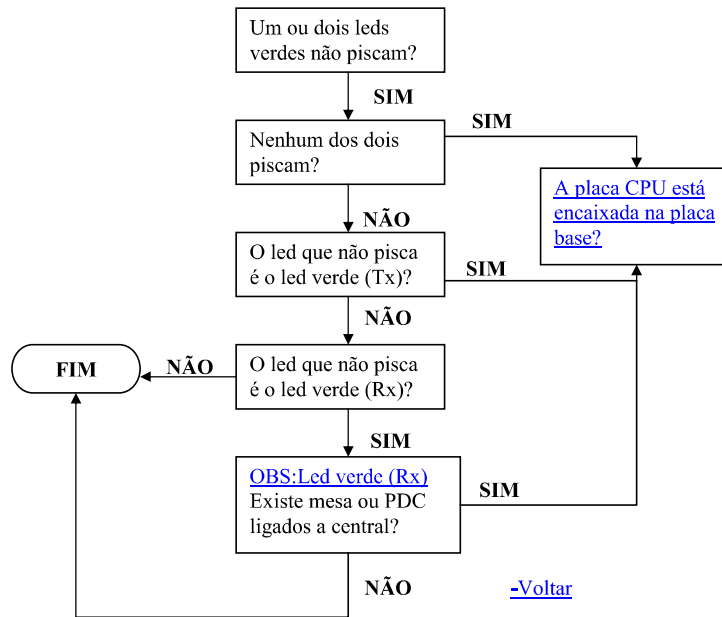


Tabela 1.2	
MODELO DE FONTE	
FONTE CHAVEADA	
COR DO CABO	TENSÃO
AMARELO	40 Á 48V AC
PRETO/CINZA	+0V
BRANCO	+28 á +36V
AZUL	+10 á 13V
VERDE	+20 á +24V
MARROM	+5,6V
VERMELHO	+5V

As tensões 0,+5,6,+5V podem ter uma tolerância máxima de +/- 1%.

[-Voltar](#)

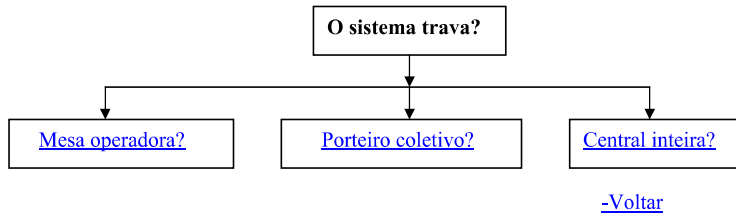


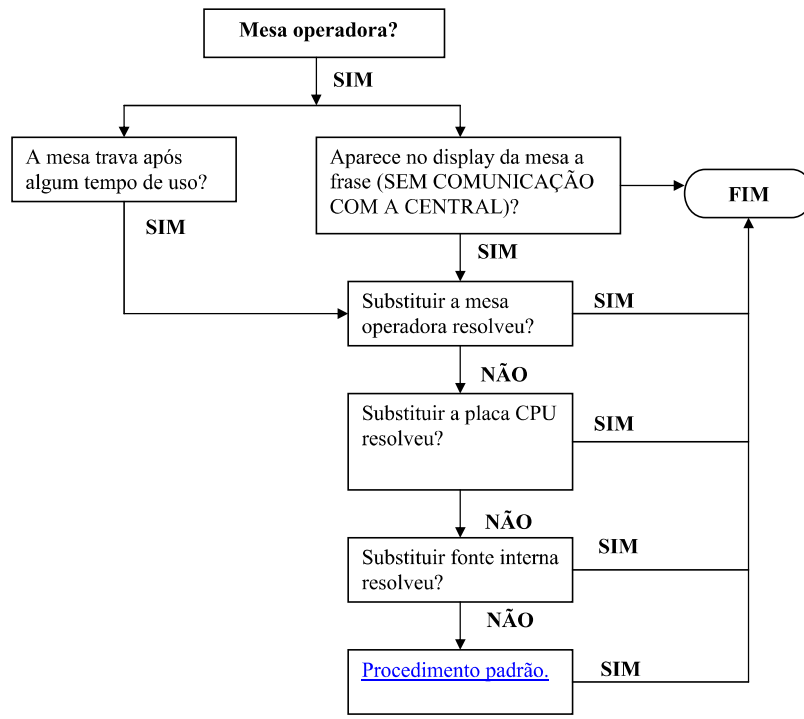


OBS:Led verde (RX)

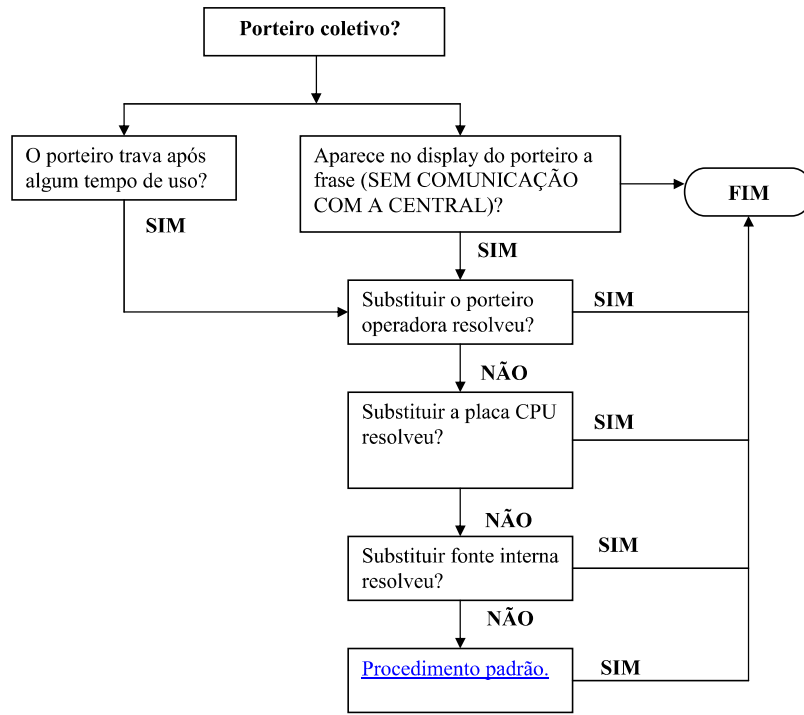
O led verde Rx não ira piscar se não houver mesa ou porteiro digital coletivo plugados a central.

[-Voltar](#)

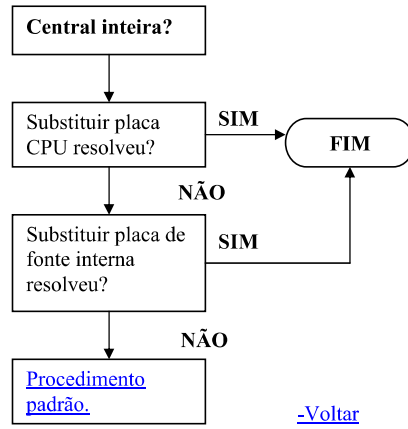


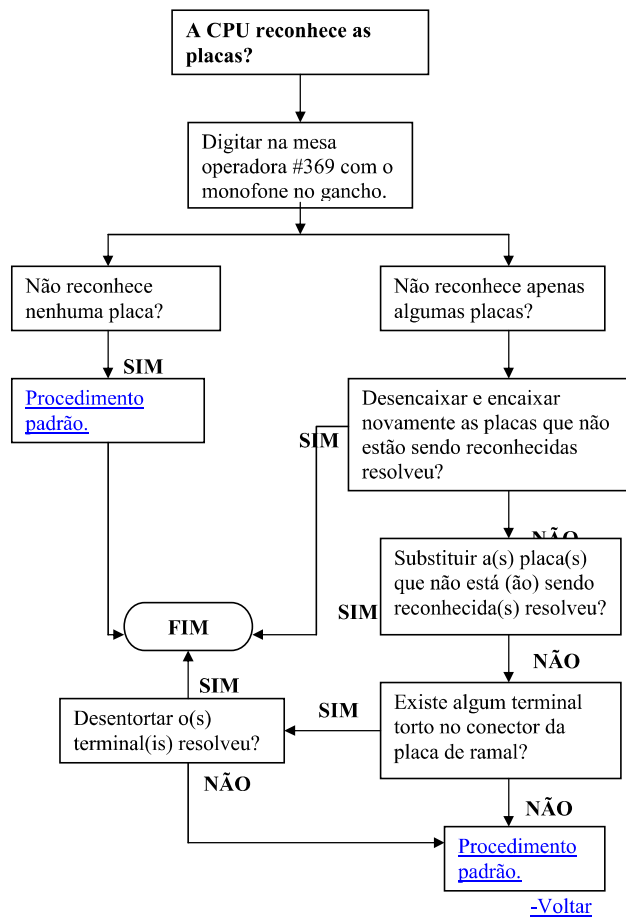


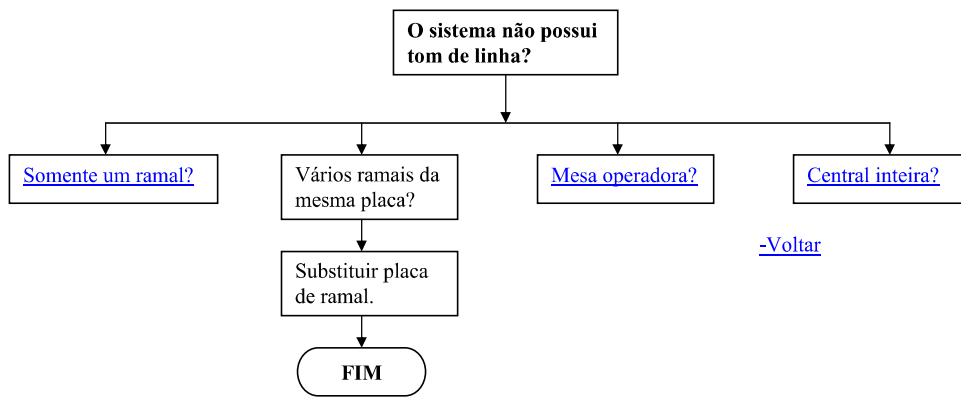
[-Voltar](#)

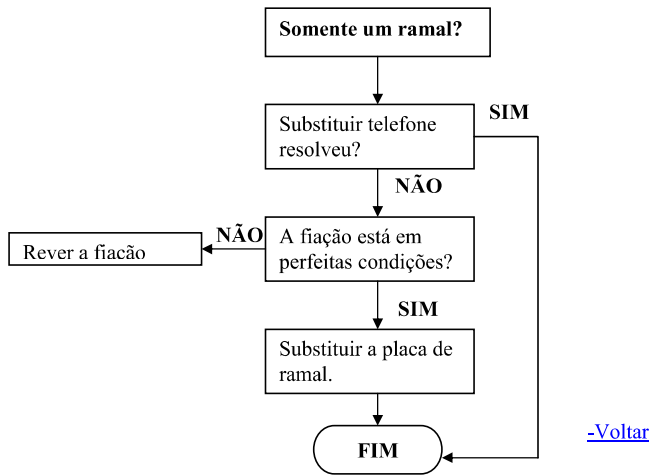


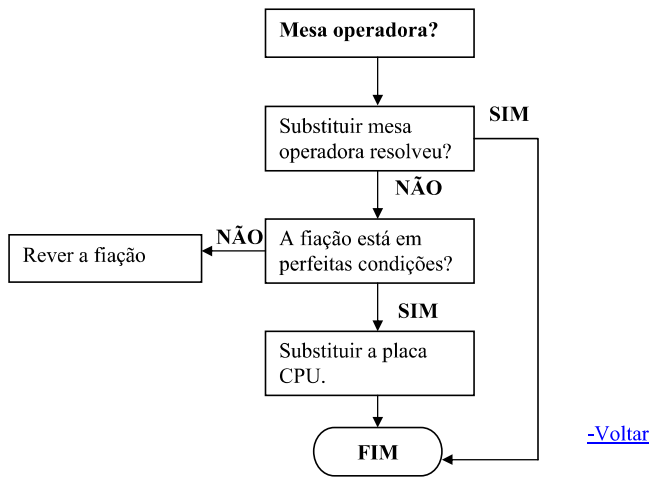
[-Voltar](#)

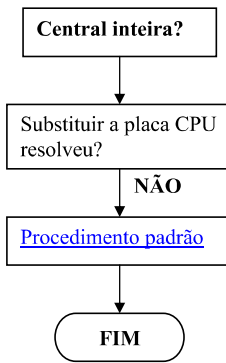




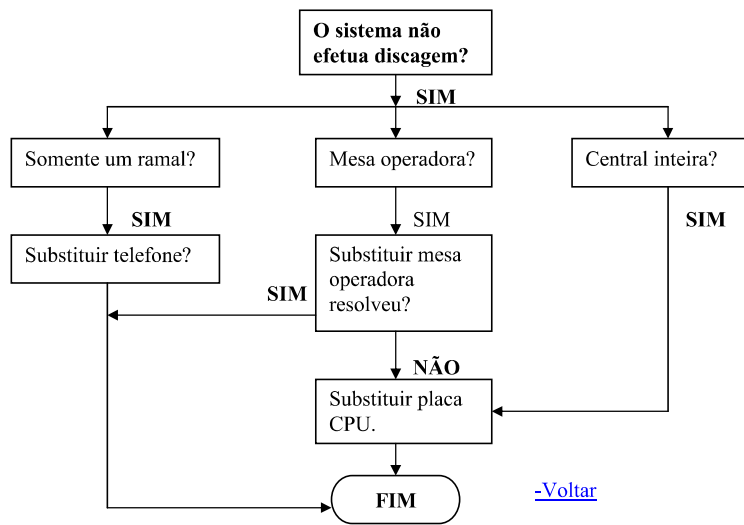




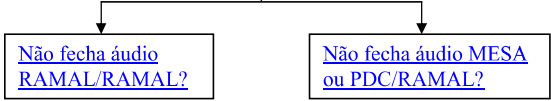




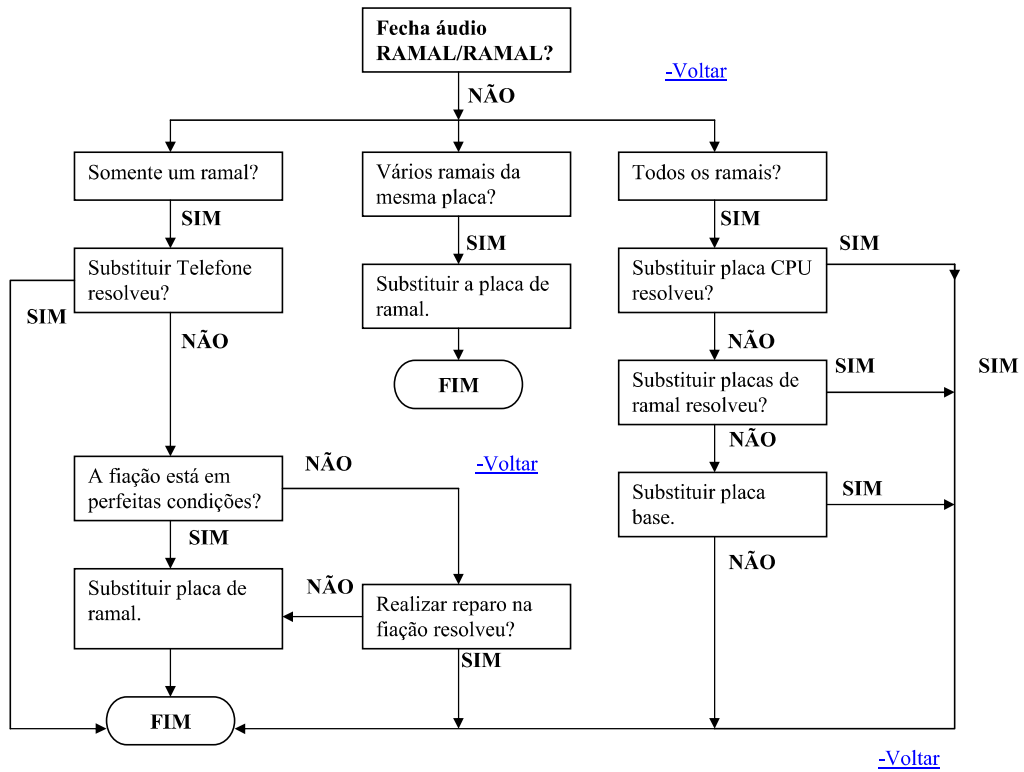
[-Voltar](#)

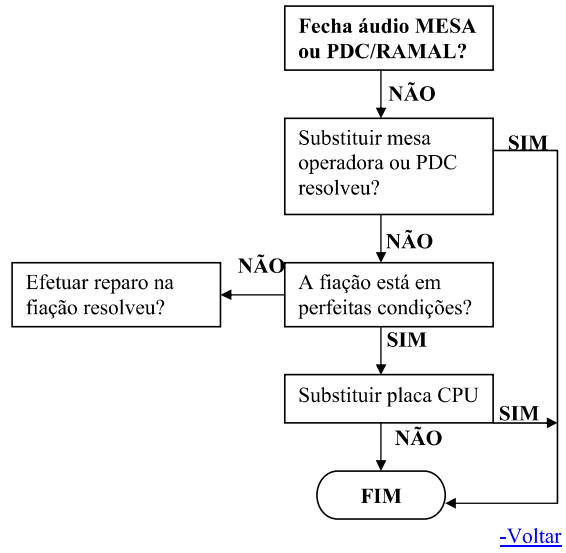


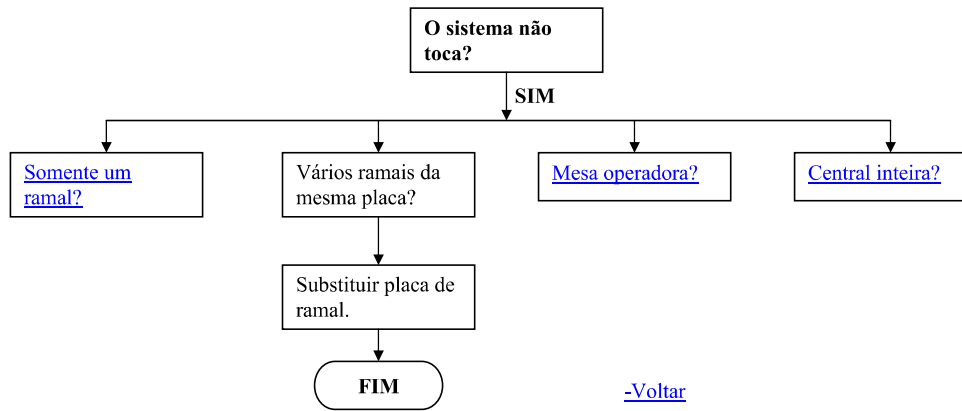
O sistema não fecha áudio?

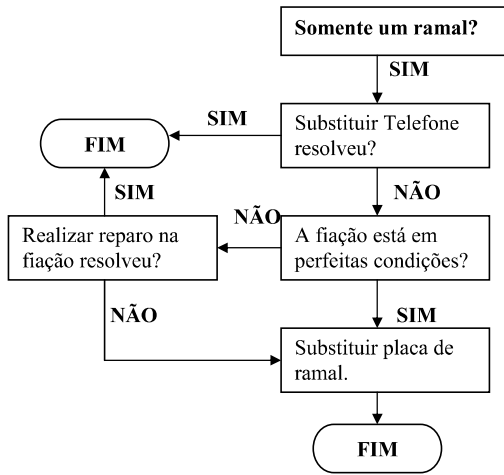


[-Voltar](#)

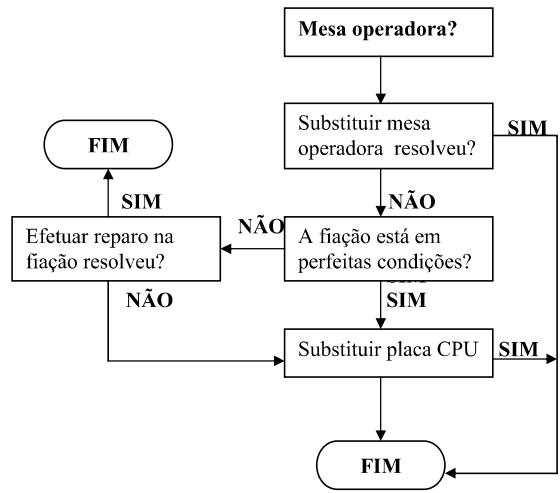




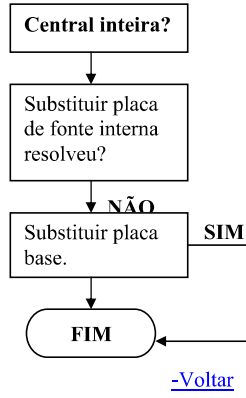


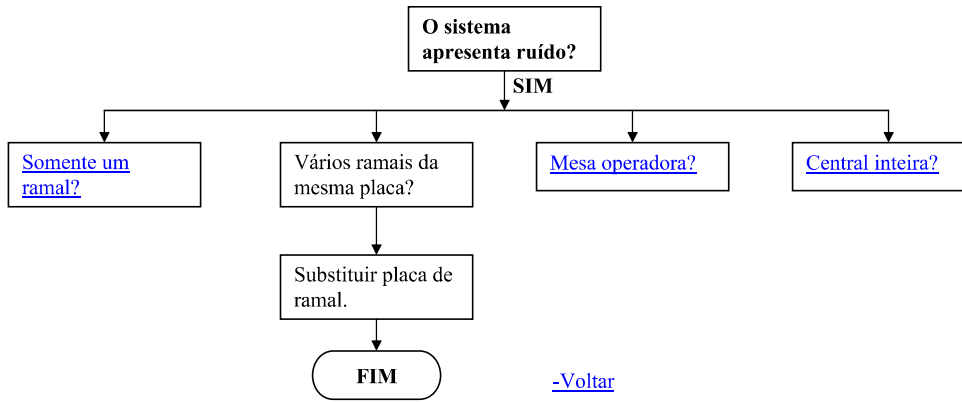


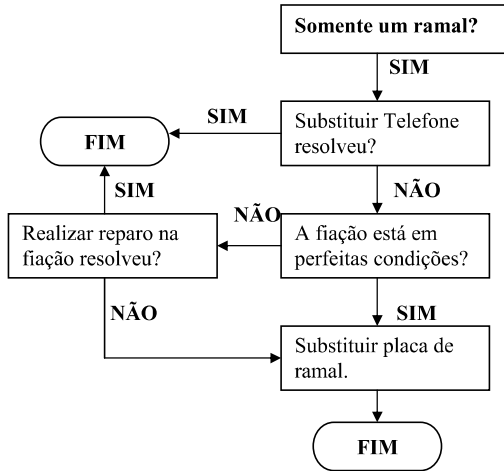
[-Voltar](#)



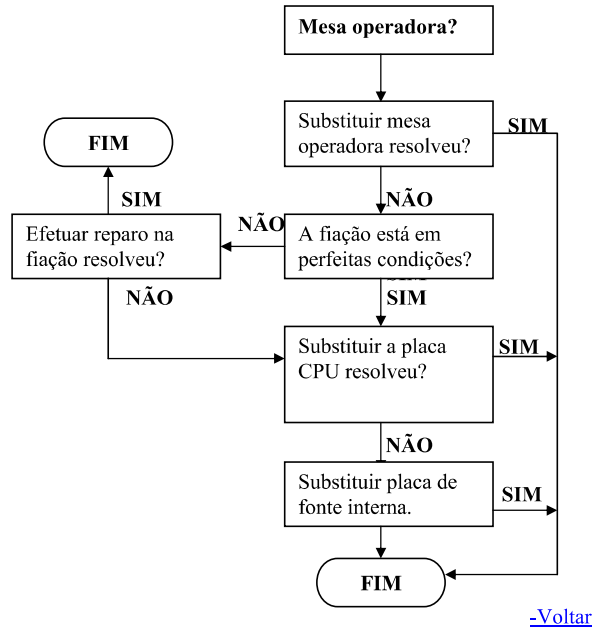
[-Voltar](#)

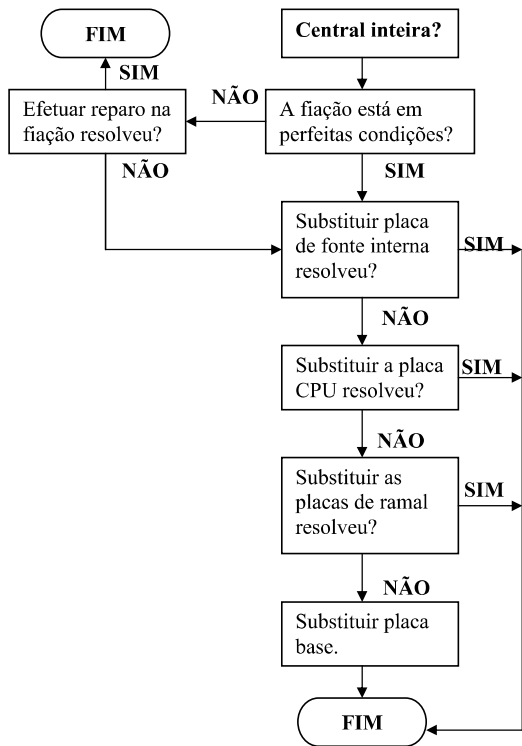




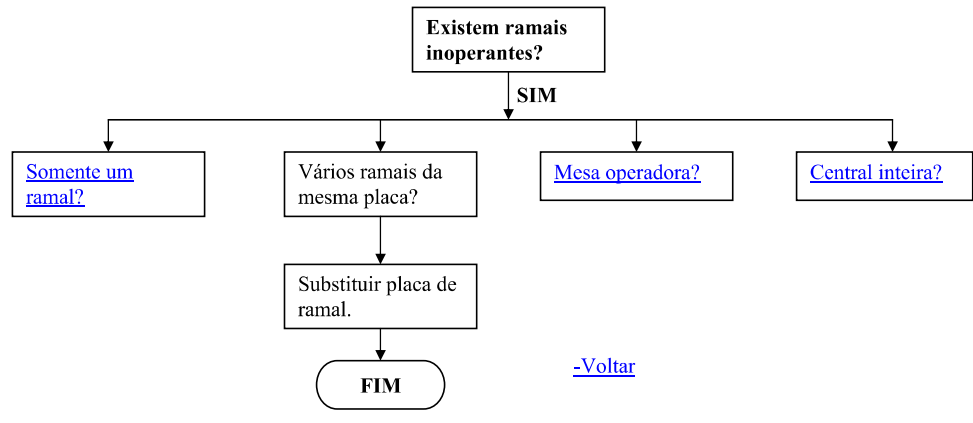


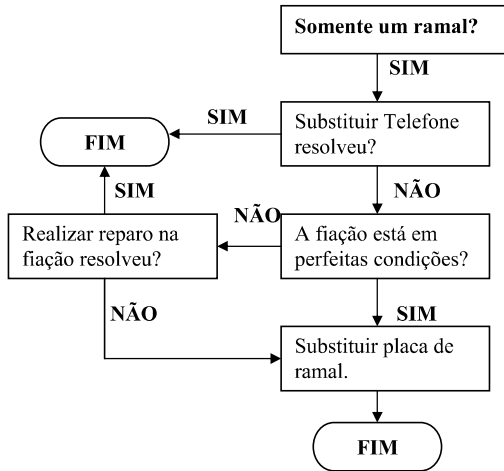
[-Voltar](#)



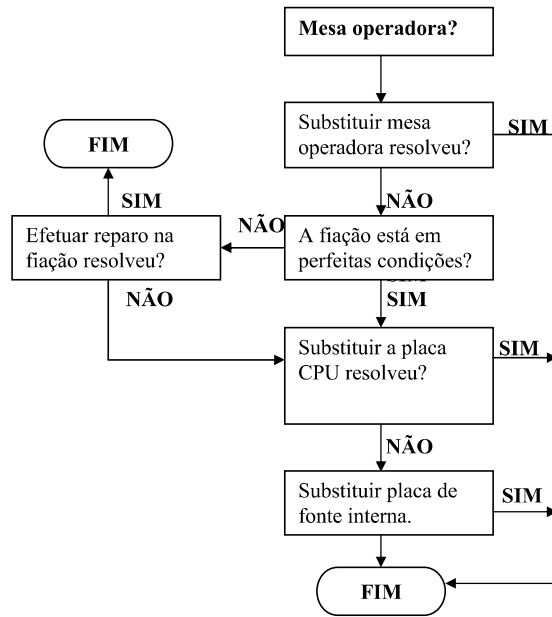


[-Voltar](#)

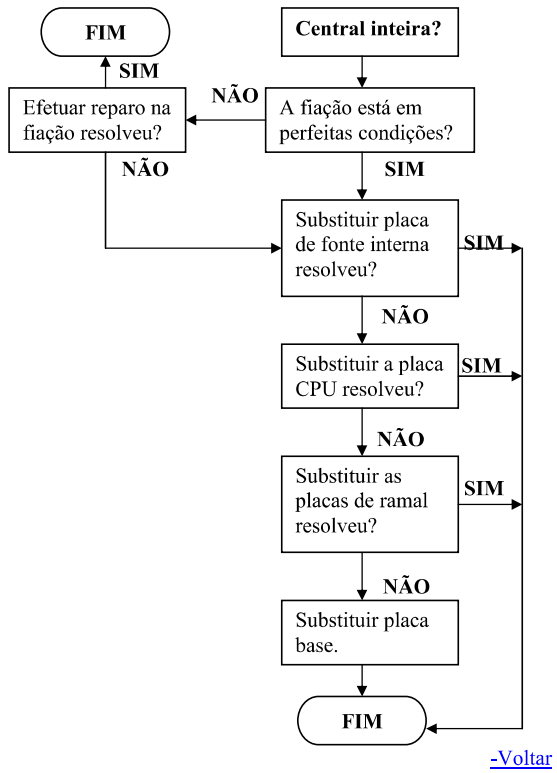


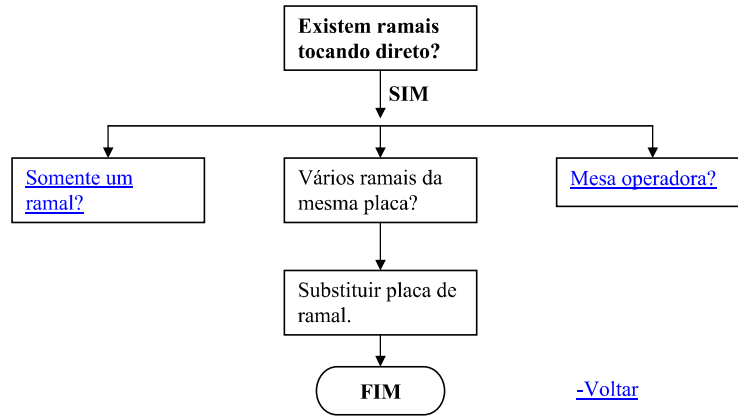


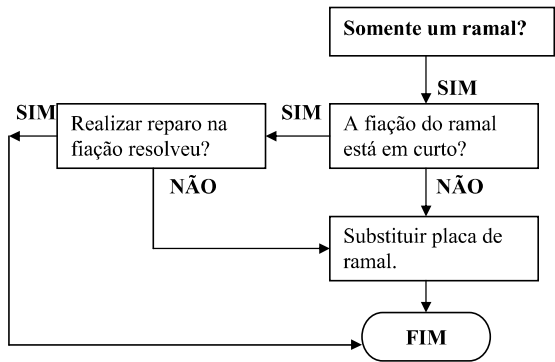
[-Voltar](#)



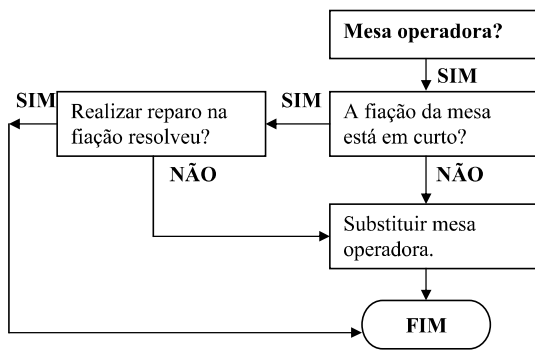
[-Voltar](#)







[-Voltar](#)



[-Voltar](#)

